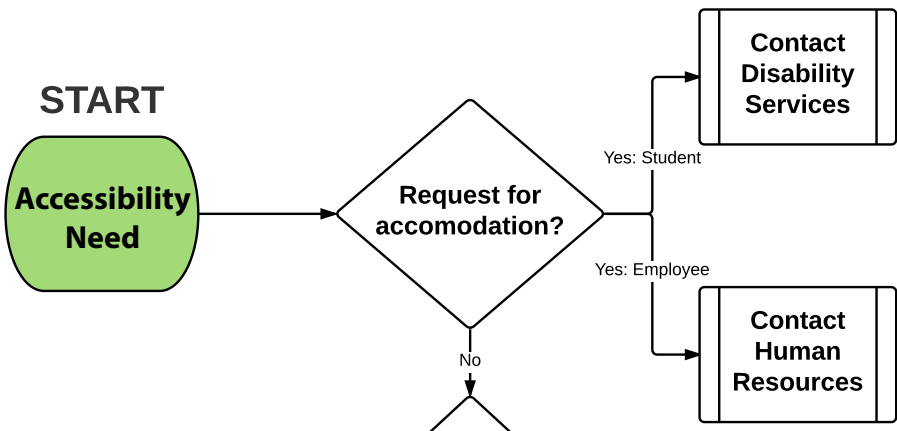




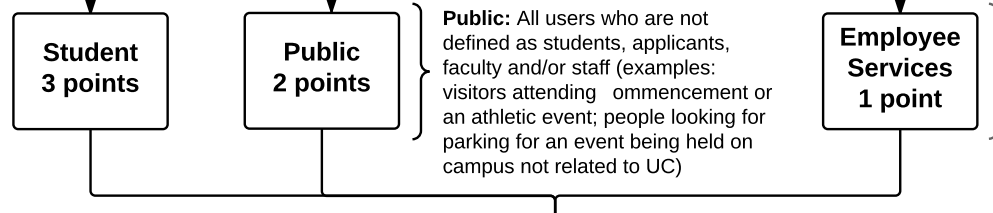
DRAFT Priority Matrix

02-01-2017

Purpose: This matrix is a tool used for determining priority of workflow within the program. To use, assign points according to selections. When assigning points, use the highest ranking selection. For example, if a website is used both by students and the public, use the student score since it is higher.



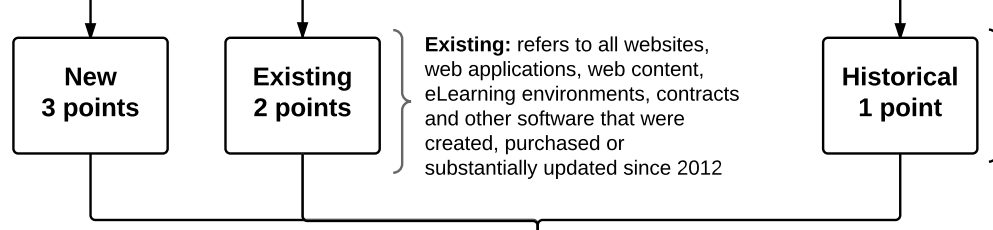
Students (and Applicants): Students, including students enrolled at UC, students who have been accepted into UC, and former students of UC where applicable; and applicants for admission to UC, including individuals who have applied for admission to UC, and, as applicable, prospective applicants (i.e., individuals who seek to apply for admission to UC).



Employees; Faculty and staff of UC, including student workers when they are accessing employee websites as part of their capacity as employees of the university



New: refers to websites, web applications, web content, eLearning environments, contracts and other software that were non-existent until on or after May 1, 2017 OR redeveloped (i.e., existing before entry of May 1, 2017 but substantially changed or updated in terms of functionality, structure, or content) by academic divisions, academic departments, and administrative offices.



Historical: refers to all websites, web applications, web content, eLearning environments, contracts and other software that were not created, purchased or substantially updated on or after 2012.



High and Medium and Low Volume: Number of users in a given time frame (dependent upon project teams)

Enrollment Services: Any office that supports the enrollment and financial business needs for students. Includes Admissions, Bursar, Financial Aid, One Stop, and Registrar

